

# Alaska Department of Fish and Game

Habitat Section  
Southeast Region



**112-50-10100-2085**

**ADDITION**

**Water body name:**

**Quad:** Sitka D-4

**Upper Reach Latitude:** 57.849321 **Longitude:** -135.155985

**Lower Reach Latitude:** 57.852066 **Longitude:** -135.157052

**Survey date:** 9/14/2022

**Species & Lifestage:** CO

**Survey crew:** DK, RR

**Findings:** We surveyed this cataloged stream using baited minnow traps and GPS. We captured juvenile coho salmon, Dolly Varden, and stickleback. The stream falls out of a 3 ft wide culvert with a 2-to-3 ft perch and flows into a complex of beaver dams, becoming ponded (Table 1; Figures 1–3).

**Recommendations:** Extend upper extent of Stream No. 112-50-10100-2085 in the anadromous waters catalog (Figure 4).

**Nomination:** Pending

Table 1.—112-50-10100-2085 survey data.

Waypoint	Latitude	Longitude	Notes	Stream Width ft	Stream Substrate	Habitat Features	Gradient %	Sample Effort	Sample Results
1823	57.849363	-135.156927	3' tall beaver dam, no clear outfall. Trap set below in flooded channel.	50+	Fine Organic	Beaver Pond	0-1	MT	3 CO
1824	57.849318	-135.156391	Small stream flows into beaver complex.	2-4	Small Gravel		2-4	MT	3 CO 2 DV 1 SB
1825	57.849320	-135.156193	36" CMP, 2-3' perch.						



Figure 1.—Ponded channel at waypoint 1823.



Figure 2.—Juvenile coho salmon captured at waypoint 1823.



Figure 3.—Perched culvert outlet at waypoint 1825.



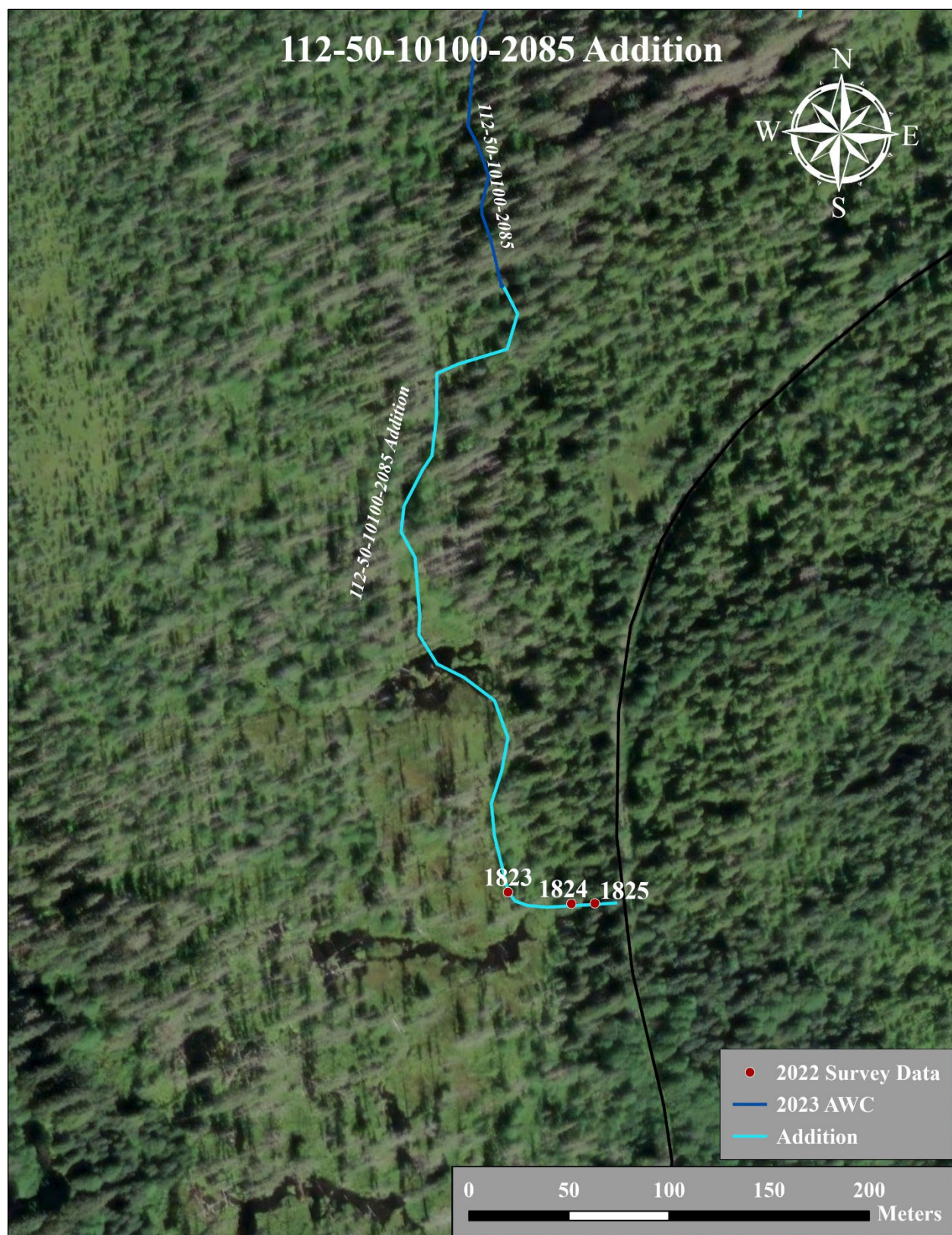


Figure 4.—Stream No. 112-50-10100-2085 addition map.